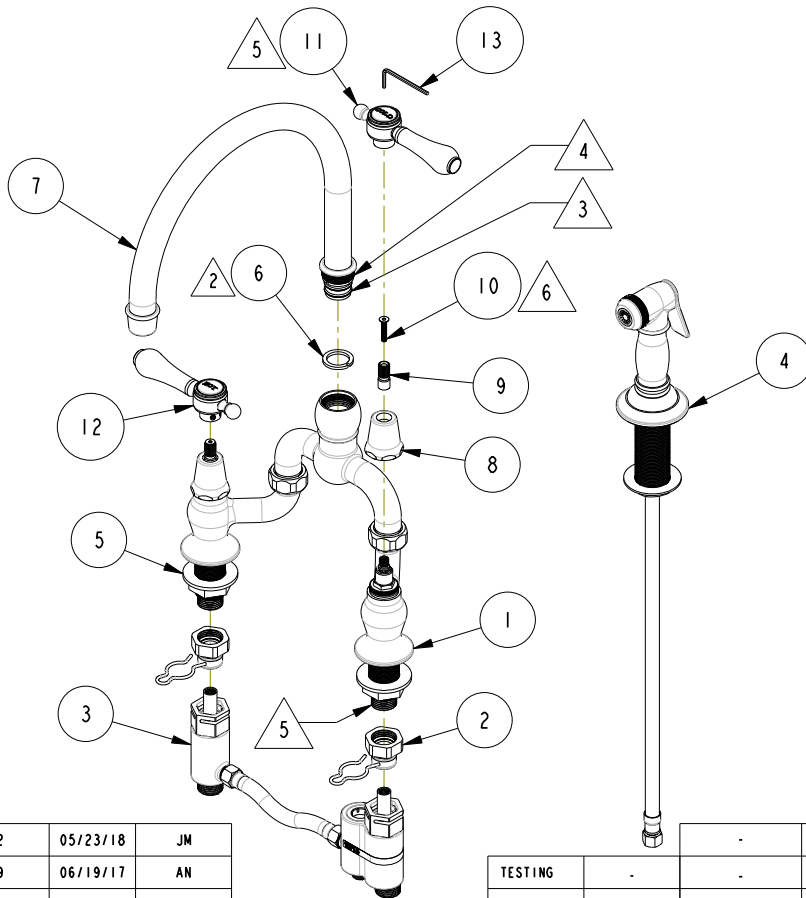


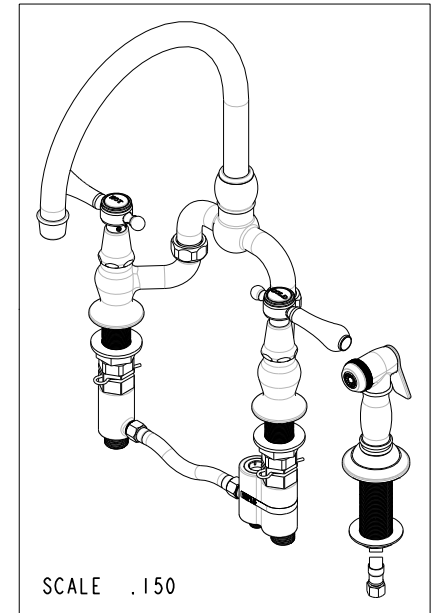
NOTES:

- (N1) 1. FIT / FORM / FUNCTION SHALL FOLLOW PS-E.008.
- 2. TRIM 3/8" OF SPLIT RING AND PLACE BETWEEN SPOUT AND BODY.
- 3. APPLY THIN COAT OF SILICON GREASE ON O-RINGS.
- 4. APPLY LOCTITE 242.
- (N5) 5. COLD HANDLE ASSY (ITEM 11) AND BLUE DYKEM LEG OF BRIDGE BODY ASSY (ITEM 1) ARE LOCATED ON THE SAME SIDE.
- 6. APPLY LOCTITE 242 IF SCREW DOES NOT HAVE NYLON PATCH.



BILL OF MATERIAL (CURRENT LEVEL)

ITEM	PT/ASSY	DESCRIPTION	TYPE	QTY.
1	3-523	KITCHEN BRIDGE BODY ASM, SIDE SPRAY	ASSEMBLY	1
2	1-152	SEAT ASSY, UPPER	ASSEMBLY	2
3	2-472	DIVERTER ASSY, BRIDGE FAUCET	ASSEMBLY	1
4	129	KITCHEN SPRAY HEAD	ASSEMBLY	1
5	91473	FLANGE NUT 1.006"-20	PART	2
6	91111	SPLIT RING 3/4 X 1 NYLON	PART	1
7	3-525	SPOUT ASSEMBLY	ASSEMBLY	1
8	12259	HANDLE BONNET - TUB FILLER	PART	2
9	12062	ADAPTER - 20-T X 16-T	PART	2
10	92539	SCRW, M4X22 FLAT HD SOCKET HD CAP	PART	2
11	2-133	HANDLE ASSEMBLY - COLD	ASSEMBLY	1
12	2-134	HANDLE ASSEMBLY - HOT	ASSEMBLY	1
13	10159	HEX KEY, 3/32 ALLOY STEEL	PART	1



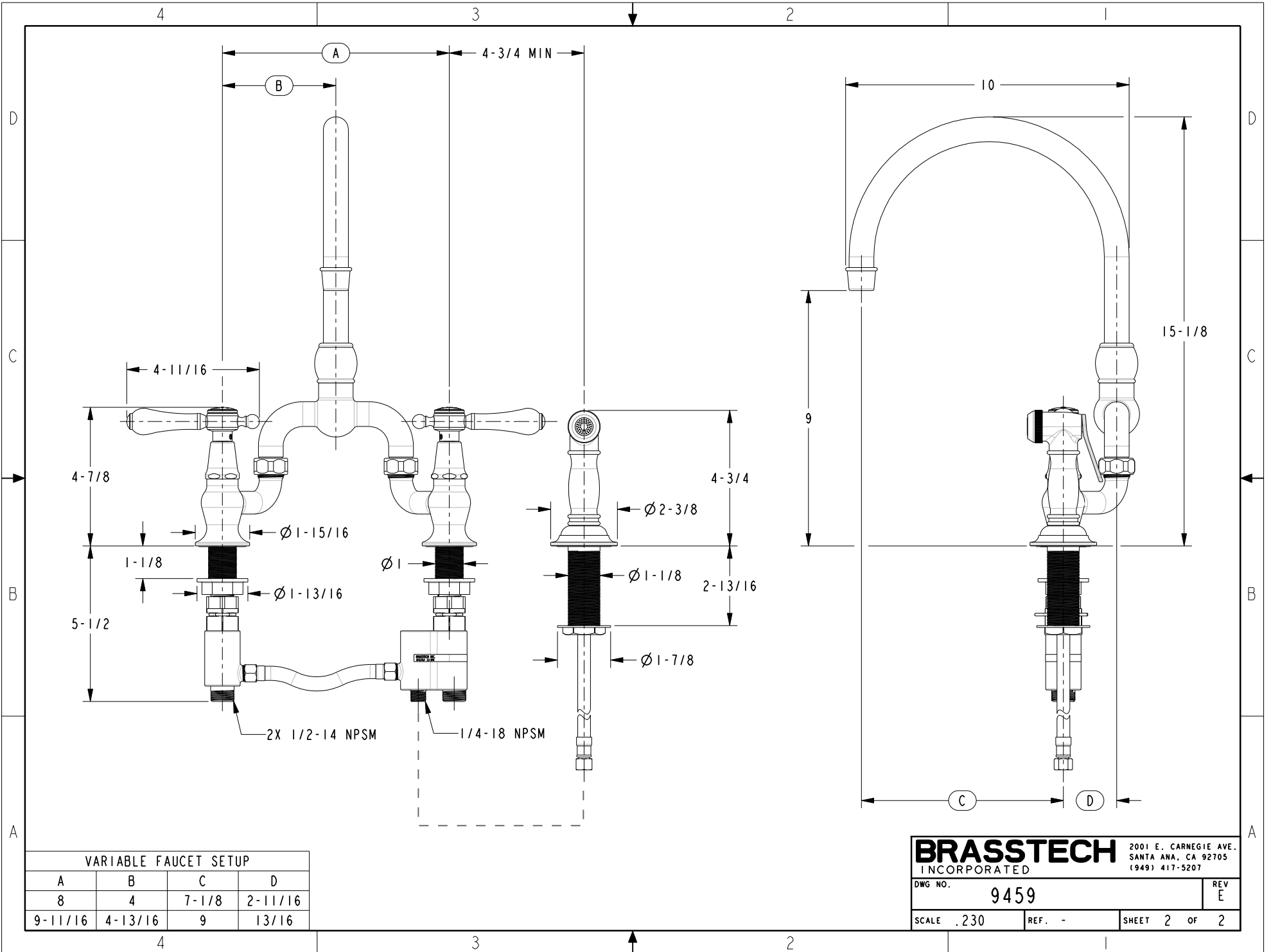
-	E	EN-3612	05/23/18	JM
-	D	EN-2909	06/19/17	AN
-	C	EN-3039b	05/03/16	AN
-	B	EN-2920	09/11/15	H.LE
-	A	EN-2907	06/19/15	-
-	-	EN-2744	12/11/14	-
ZONE	REV	DESCRIPTION	DATE	APPROVED

COPYRIGHT 2005 BRASSTECH, INC. THESE DRAWINGS AND THE DESIGNS DEPICTED HEREIN ARE THE PROPRIETARY PROPERTY OF BRASSTECH. ANY USE OR REPRODUCTION IS SUBJECT TO THE EXPRESS APPROVAL OF BRASSTECH. UNAUTHORIZED USE IS STRICTLY PROHIBITED. ALL RIGHTS RESERVED.

TESTING	-	-	-
ASSEMBLY	-	-	-
PLATING	-	-	-
POLISHING	-	NEXT ASSY	USED ON
MACHINING	-	APPLICATION	
TOOLING FIXTURE #	REMOVE ALL BURRS AND SHARP EDGES		

UNITS ARE: INCHES [MM]			
TOLERANCES ARE:			
FRACTIONS	DECIMALS	ANGLES	
±1/16"	.X ±.1 [2,5]	±1°	
	.XX ±.06 [1,5]		
(X.XXX) DENOTES CRITICAL DIMS.			
ALL THREADS ARE CRITICAL			
DRAWN	AMARISH	09/11/15	
CHECKED	JINSON	09/11/15	
APPROVED	RAVINDRA	09/11/15	

BRASSTECH		2001 CARNEGIE AVE. SANTA ANA, CA 92705 (949) 417-5207	
INCORPORATED			
KITCHEN BRIDGE FAUCET W/ SIDE SPRAY			
DWG NO.	9459	REV	E
SCALE	.160	REF.	-
SHEET	1	OF	2



VARIABLE FAUCET SETUP			
A	B	C	D
8	4	7-1/8	2-11/16
9-11/16	4-13/16	9	13/16

BRASSTECH 2001 E. CARNEGIE AVE.
 INCORPORATED SANTA ANA, CA 92705
 (949) 417-5207

DWG NO. 9459 REV E

SCALE .230 REF. - SHEET 2 OF 2