

# Mirabelle®

## BRADENTON COLLECTION

### TWO-PIECE SKIRTED HIGH EFFICIENCY TOILET

#### Product Codes:

MIRBD240SWH - Elongated skirted bowl (White)

MIRBD200WH - tank, 12" rough-in (white)

MIRBD200UWH - insulated tank, 12" rough-in (white)

MIRBD200RWH - right hand tank, 12" rough-in (white)

- Skirted bowl
- 1.28 gpf HET, High efficiency toilet
- Includes slow close seat and cover
- EPA WaterSense certified
- ADA & CSA B651 compliant 16-9/16" high bowl
- Uses 20% less water than standard low-consumption toilets
- 2" fully glazed trapway with high performance 3" flush valve
- Includes polished chrome trip lever
- 100% factory flush tested
- Installation, operating, care and maintenance instructions included
- Supply not included
- 5-year warranty on tank fittings, lifetime warranty on ceramics
- Meets ASME standard: A112.19.2M
- cUPC/IAMPO listed
- Recommended Accessories  
MB423CP - Flush lever, CP  
MB423BN - Flush lever, BN  
MB423ORB - Flush lever, ORB



See dimensional drawing on back

© 2018 Ferguson Enterprises, Inc. All Rights Reserved 1082973 12/18



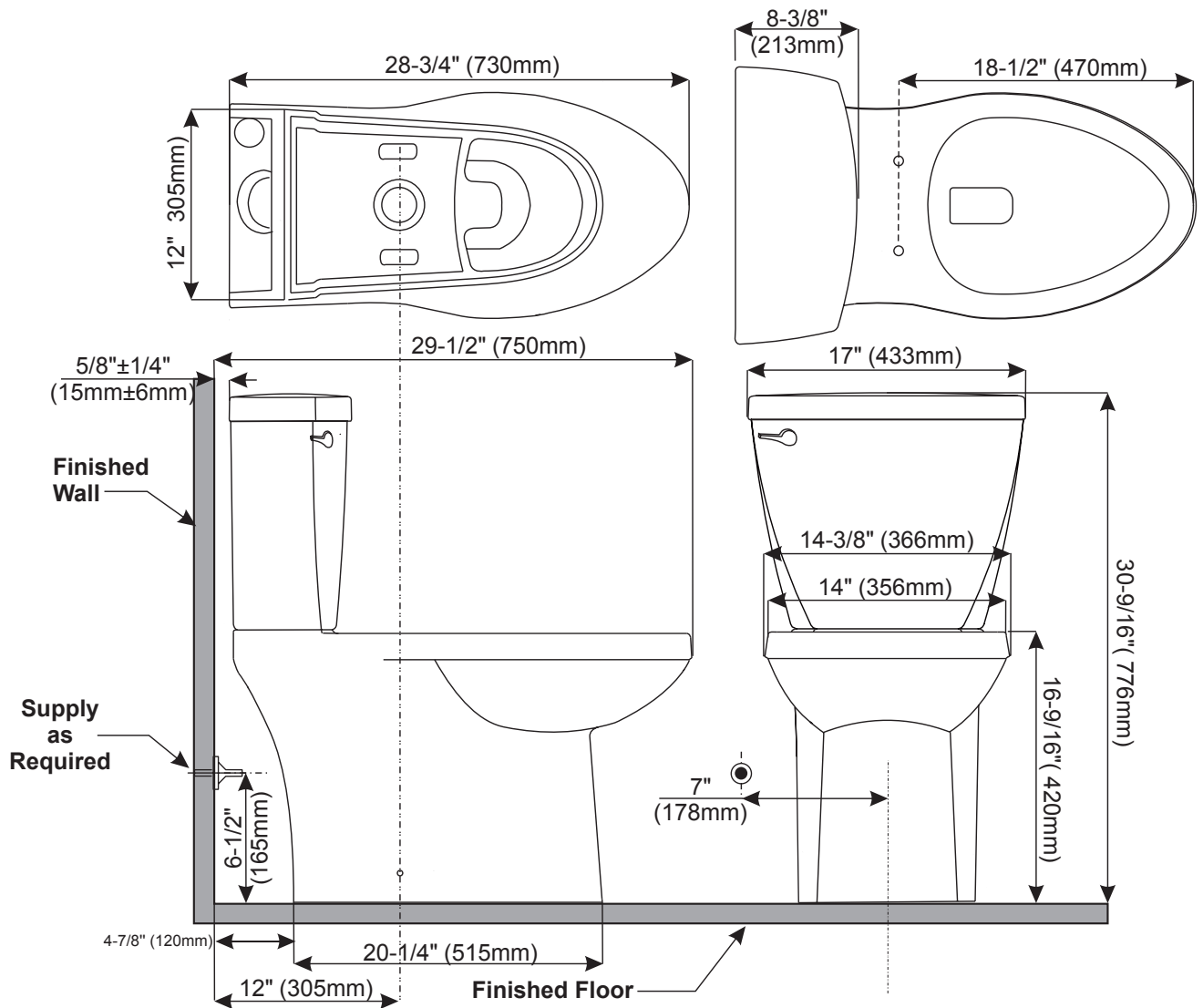
# Mirabelle®

## BRADENTON COLLECTION

### TWO-PIECE SKIRTED HIGH EFFICIENCY TOILET

**Product Codes:**

- MIRBD240SWH - Elongated skirted bowl (White)
- MIRBD200WH - tank, 12" rough-in (white)
- MIRBD200UWH - insulated tank, 12" rough-in (white)
- MIRBD200RWH - right hand tank, 12" rough-in (white)



Note: All dimensions and specifications are nominal and may vary +/- 1/4". Use actual products for accuracy in critical situations.