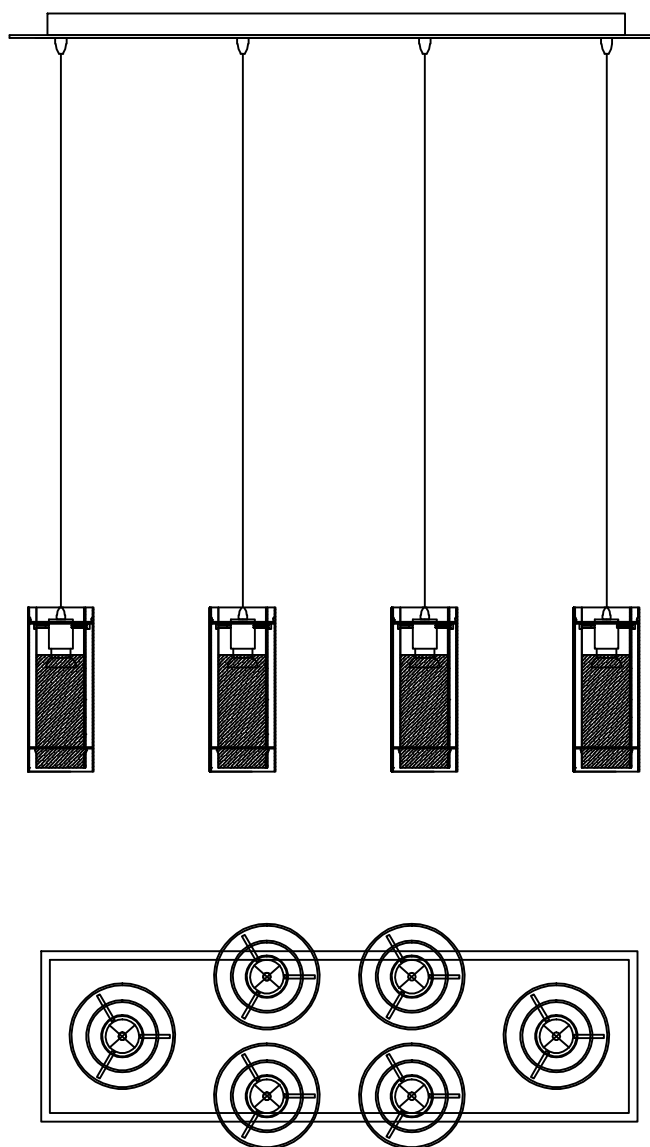




Contemporary Lighting

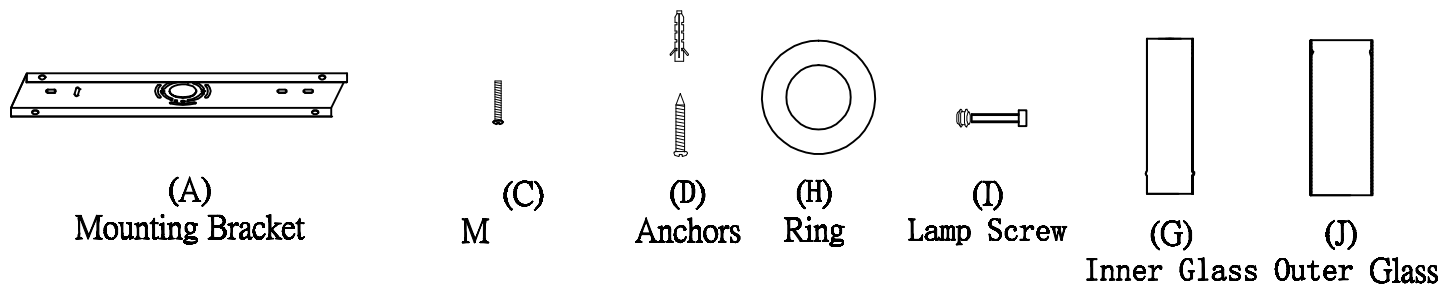
PRODUCT NAME: Frost
ITEM NUMBER: E22002-10

Please consult your electrician for hanging fixture and wiring.

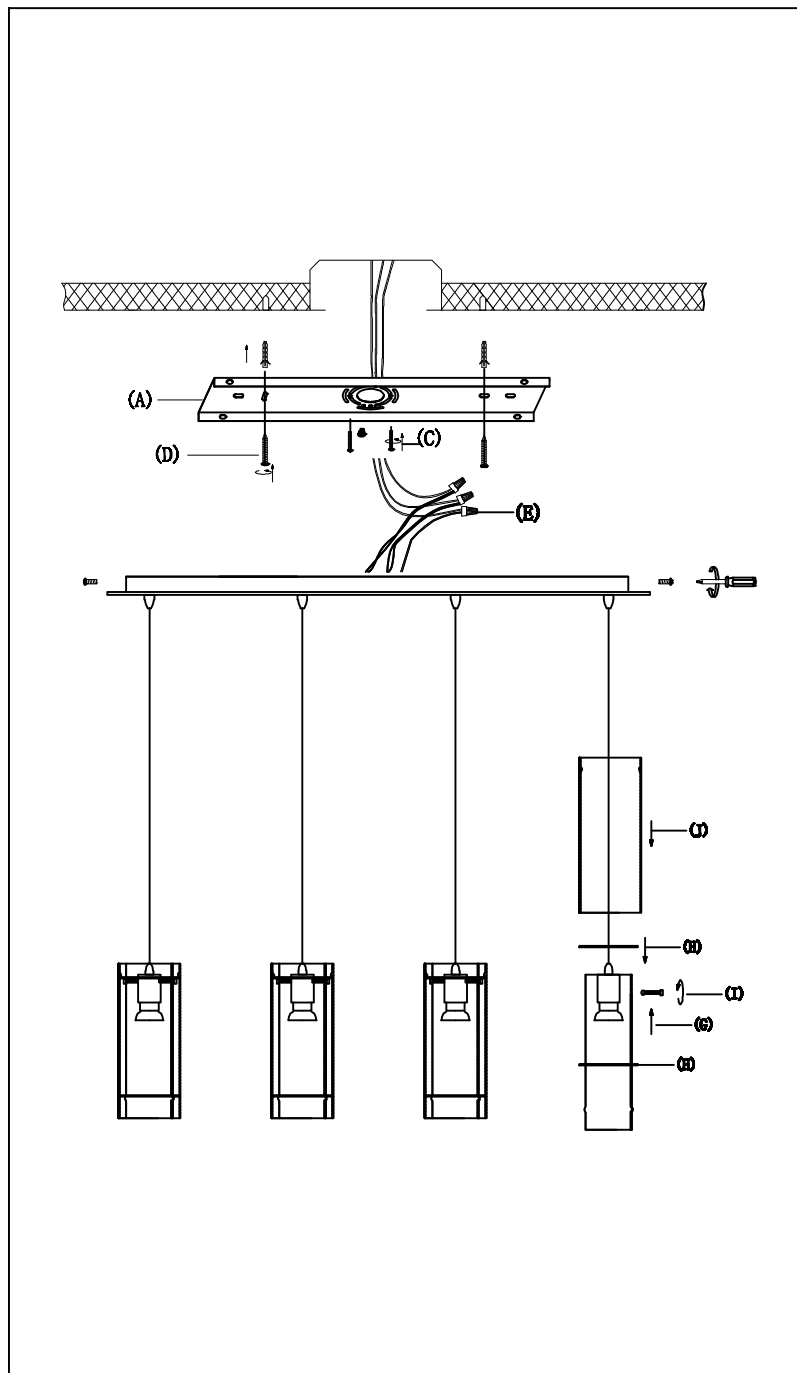


Bulbs (Not included): 6*60Watt E26

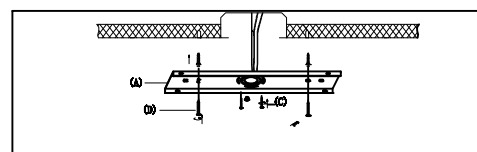
IMPORTANT: Turn off the power at the main fuse or circuit breaker box before starting installation



Locate all hardware & components before discarding packaging

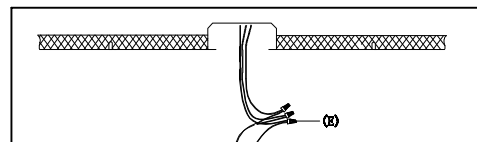


1.)



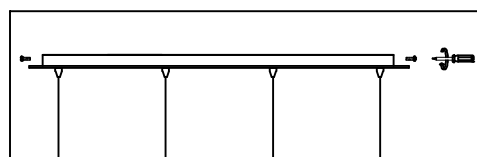
Step.1: Remove mounting bracket from fixture and install to electrical box.

2.)



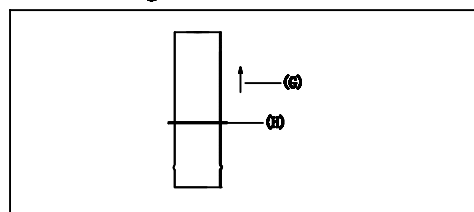
Step.2: Wire fixture to wires (E) in outlet box. Copper wire is for Ground.

3.)



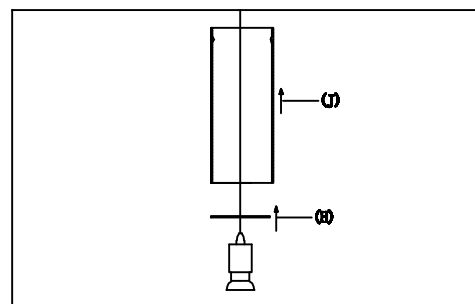
Step.3: Adjust wire to desired mounting height and secure by running wire through cord lock inside canopy. Install fixture to mounting bracket using screws on the sides.

4.)



Step.4: Slide one ring (H) over inner glass (G).

5.)

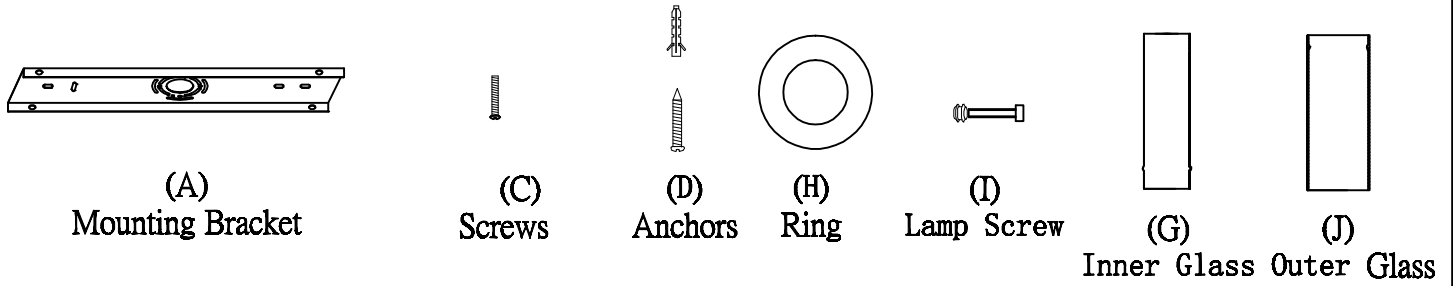


Step.5: Run socket and wire through second ring (H) and outer glass (J) as shown.

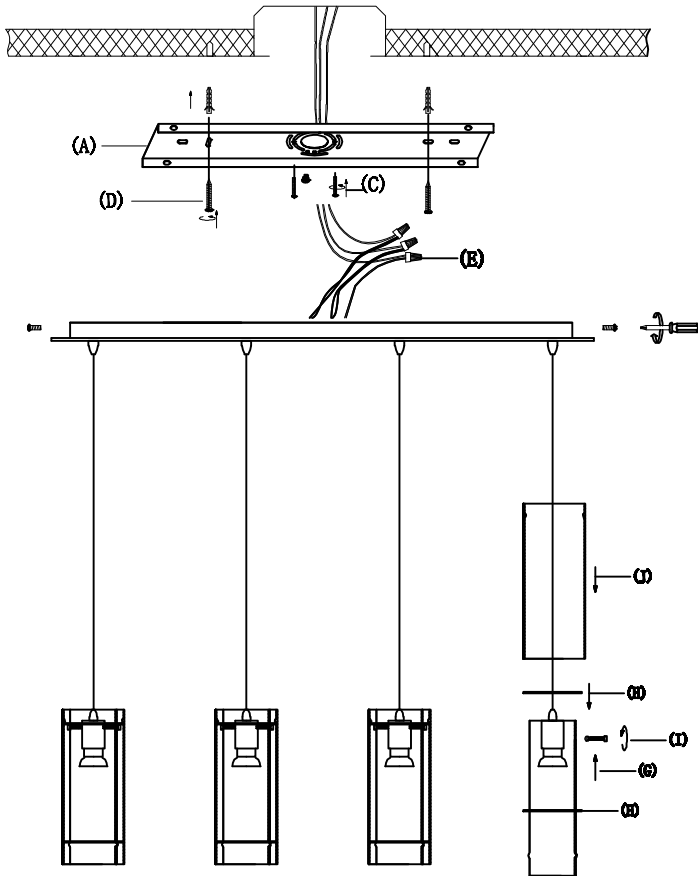
Cleaning & Care:

Clean with soft cloth and a mild detergent.
Do not use abrasive cleaner.

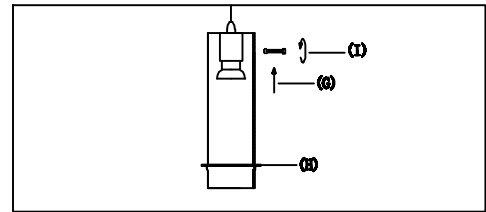
IMPORTANT: Turn off the power at the main fuse or circuit breaker box before starting installation



Locate all hardware & components before discarding packaging

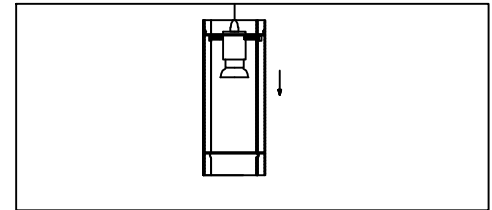


6.)



Step.6: Insert lamp into inner glass (G) and secure using lamp screw (I).

7.)



Step.7: Carefully run ring (H) and outer glass (J) over the lamp and rest on fixture.

Cleaning & Care:

**Clean with soft cloth and a mild detergent.
Do not use abrasive cleaner.**