

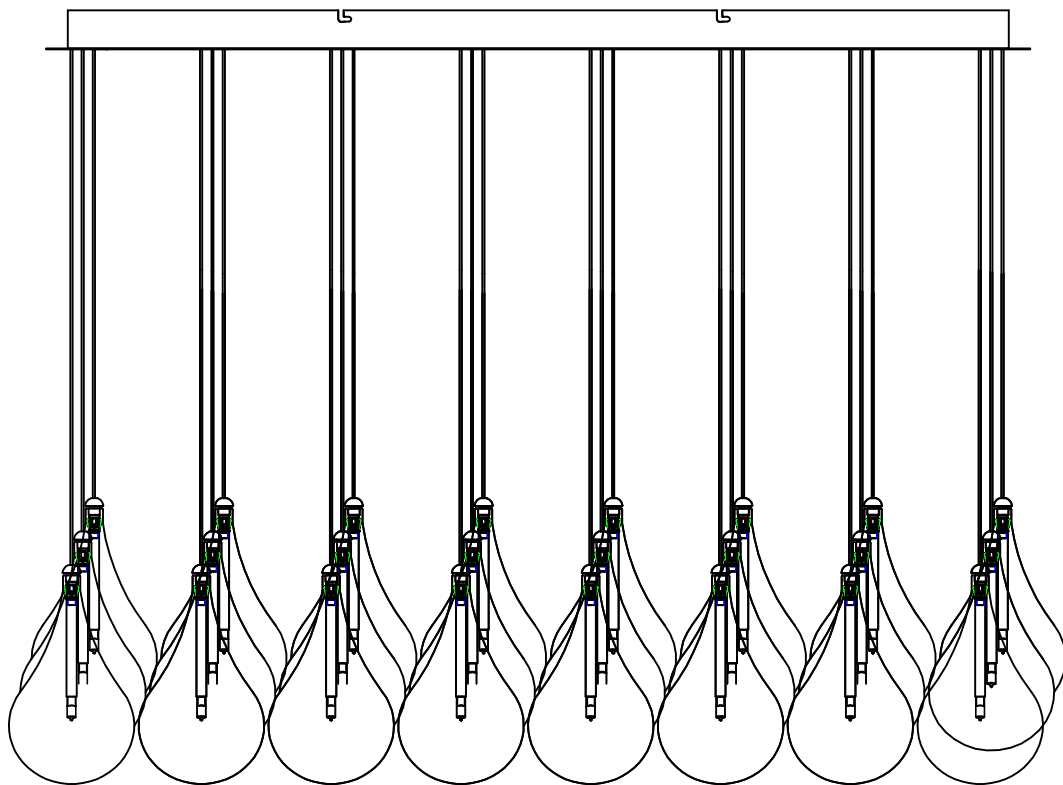


# Contemporary Lighting

PRODUCT NAME: LARMES

ITEM NUMBER: E20118-18

Please consult your electrician for hanging fixture and wiring.

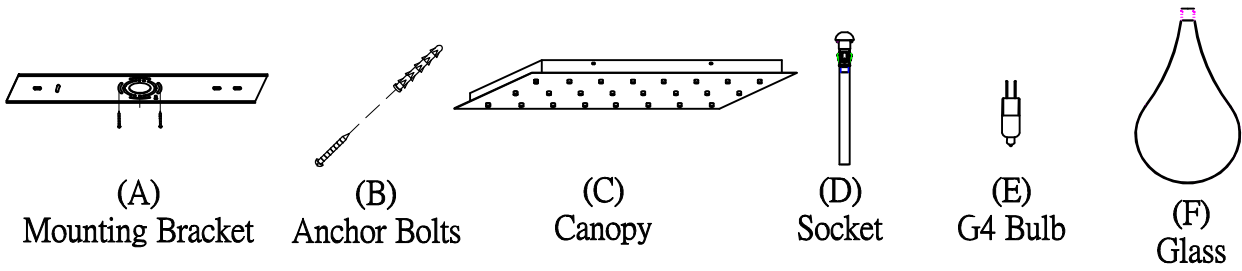


**WARNING:** Wires need to be connected to transformer found in canopy and should not be connected directly to power source or a short may occur

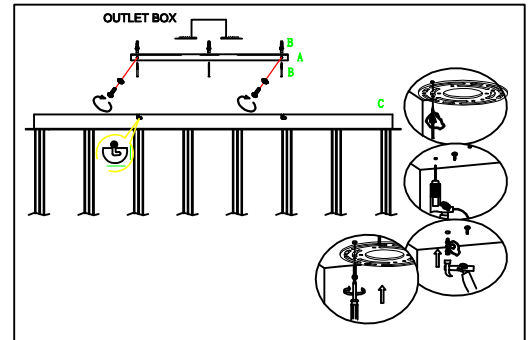
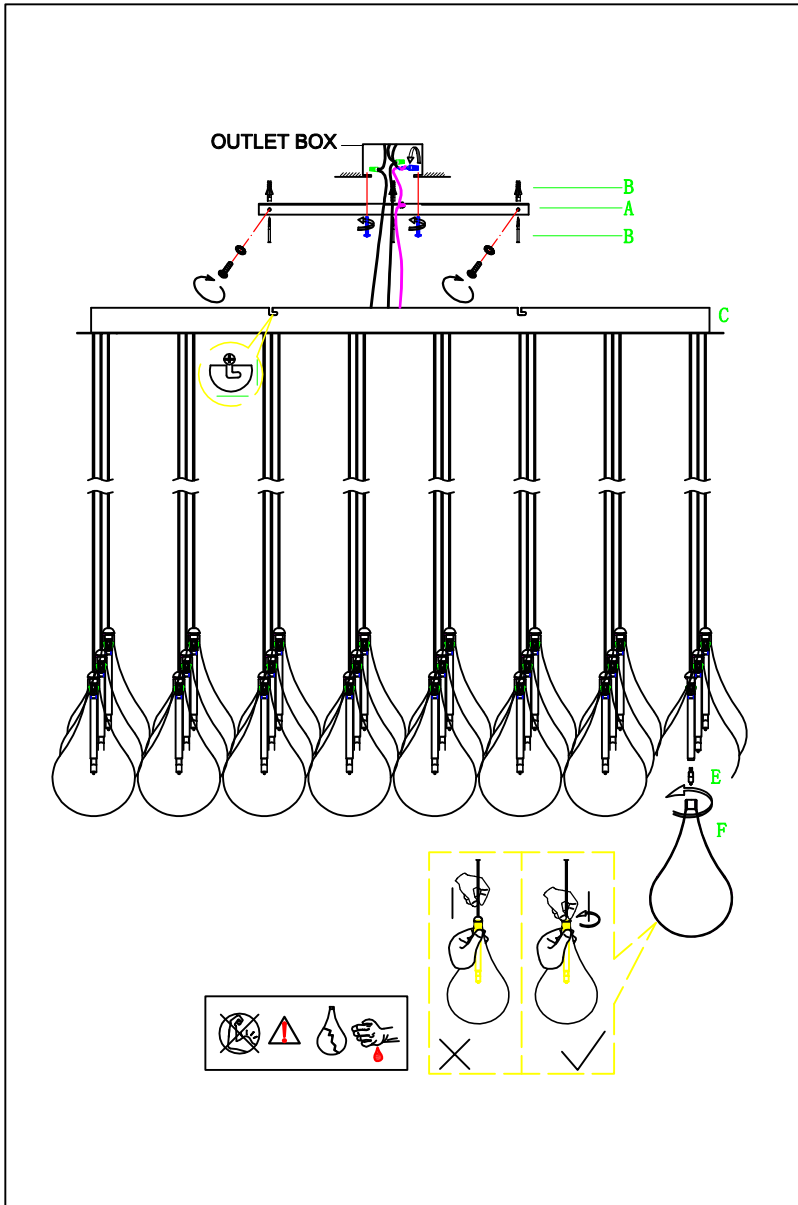
**Caution: Xenon bulbs get very hot and may burn you. Always make sure bulbs are off for a minimum of 10 minutes before handling. Fixture may be dimmed using an electronic low voltage dimmer.**

**Bulbs (Included): 24 x 10 Watt G4**

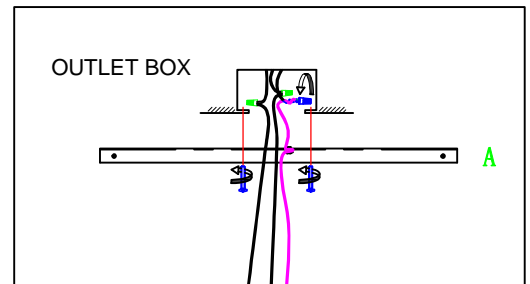
**IMPORTANT: Turn off the power at the main fuse or circuit breaker box before starting installation**



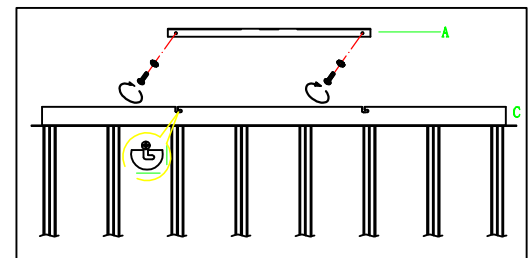
Locate all hardware & components before discarding packaging



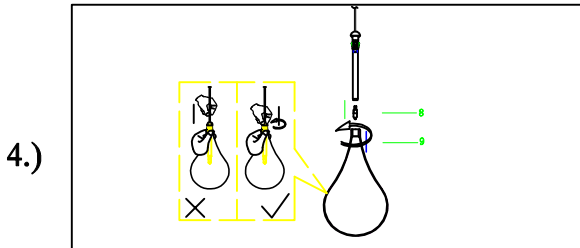
1.) **Step.1:** Remove mounting bracket (A) and install to electrical box. Mark where anchors meet ceiling, remove mounting bracket from ceiling, and then drill holes using 3/16" drill bit where marked (B). Install mounting bracket and attach anchors to secure bracket at ends.



2.) **Step.2:** Wire fixture to wires in outlet box. Green wire is for Ground.



3.) **Step.3:** Tighten screws (D) on the sides of the canopy (C) to secure the fixture.



4.) **Step.4:** Install G4 bulb (E) provided. Gently turn glass (F) onto socket (D) to secure.

**Cleaning & Care:**

Clean with soft cloth and a mild detergent. Do not use abrasive cleaner.